

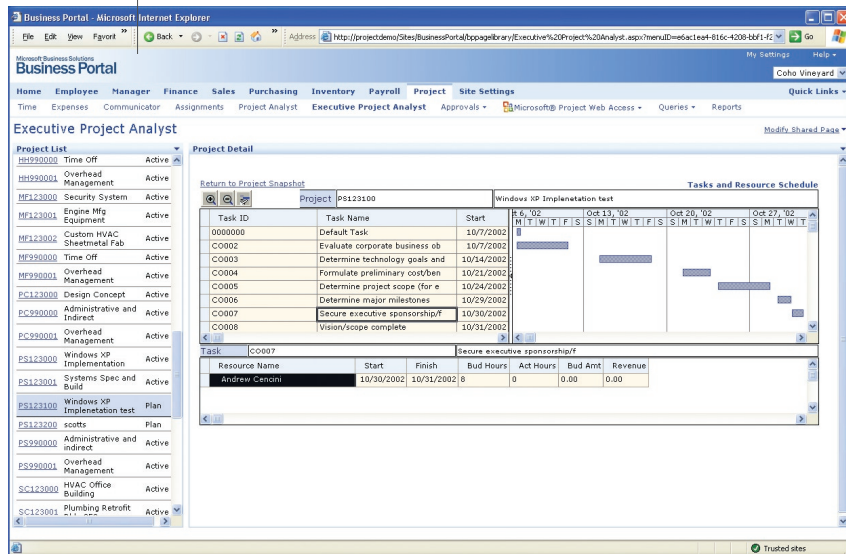
Project Management and Accounting—Solomon

Enhance business decision-making with efficient access to comprehensive data about project performance and profitability. Quickly collect and summarize data for key metrics, selectively pinpoint details for analysis, and present results in intuitive and practical formats.

B E N E F I T S

ANALYZER

Project executives can quickly view key project performance and resource data with a project snapshot.



Increase business insight

Work via the Web to retrieve, manage, and summarize key project financial, budget, and time information—across multiple projects—to assess performance, compare budgets against expenditures, and obtain the information needed to make informed business decisions.

Prevent budget surprises

Monitor costs and profitability with the flexibility to maintain original, actual, and proposed working budgets for each project.

Quickly spot trends in pivotal data

Use automated graphing tools and custom report writing options to quickly reveal trends, highlight areas of concern, focus attention, and present key points.

Work with sophisticated analysis tools

Capture data and transfer it to Microsoft® Office Excel for sophisticated manipulation—including the custom, multidimensional analysis made possible by pivot tables—and graphical views.

Enhance field manager productivity

Link Microsoft Business Solutions—Solomon Analyzer with Microsoft portal solutions to provide real-time access to pertinent project data over the Internet.

AVAILABLE WITH:



SOLOMON



SOLOMON STANDARD

ANALYZER | FEATURES AND FUNCTIONALITY

Support for Decision Making	Unleash the power of your project database by extracting, summarizing, and running queries for analysis of one project or many.
Efficient Drill-Down Capabilities	Quickly reveal the project and transaction detail behind summary data.
Online Analysis	View project schedules and real time profitability via the Web for comprehensive insight into project financial performance.
Intuitive Display Format	View familiar profit and loss (P&L) grids to easily compare results by task, project, and organizational groupings as well as by common ledger categories such as labor.
Flexible Budget Management	Preserve original budgets, track actual results on Estimate-at-Completion (EAC), and predict the impact of “what if” scenarios using Forecast-at-Completion (FAC).
One-Click Graphics	Automatically display data in graphical formats for presentations or quick assessments.
Custom Reports	Use the report writer feature to customize fields and data in your reports, incorporate special calculations, identify columns to include, and tailor reports to reflect your presentation needs.
Data Manipulation with Excel	Transfer Analyzer data to Microsoft Excel spreadsheets with a single mouse click for sophisticated modeling, analysis, and graphical rendering capabilities.
Single-Point Data Entry	Eliminate redundant data entry thanks to full integration with other Microsoft Solomon modules, including financial management, payroll, field service management, and distribution.
Remote Access to Data	Provide field managers with secure, role-based Internet access to critical project and profitability data by linking Analyzer and Microsoft portal solutions.